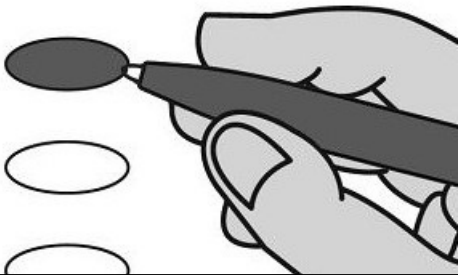


OFFICIAL BALLOT - CHARLESTON COUNTY, SC
CITY OF NORTH CHARLESTON SPECIAL ELECTION
JANUARY 13, 2026

EMERGENCY/
PROVISIONAL
NORTH
CHARLESTON 18
B001

Instructions

Marking Your Ballot



- To vote, darken the oval beside your choice using a blue or black pen. Do not make marks outside the oval.
- Vote for one candidate in each contest unless otherwise indicated.
- You do not have to vote in every contest.
- To change or correct your ballot, request a replacement from the election official.


Write-ins

- To write-in a candidate, darken the oval beside "Write-in" and print the name on the line provided.

City Council
District 1
Vote for One

- ☐ Edward Astle
- ☐ Adrian DeSaussure
- ☐ Greg Perry
- ☐ Dwayne Schalles
- ☐ Libby S Tisdale
- ☐ Kevin Walker-Porcher
- ☐

Write-In


Jenny Wooten
Interim Director
South Carolina Election Commission

ATTENTION VOTER: DO NOT REMOVE STUB FROM BALLOT

OFFICIAL BALLOT - CHARLESTON COUNTY, SC
CITY OF NORTH CHARLESTON SPECIAL ELECTION
JANUARY 13, 2026

EMERGENCY/
PROVISIONAL
NORTH
CHARLESTON 18
B001

No. _____

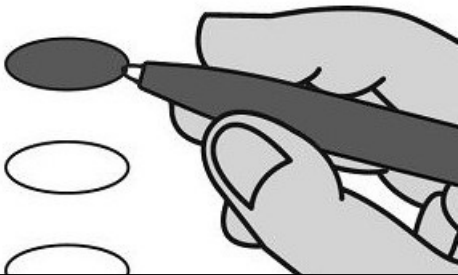
Initials of Issuing Officer

OFFICIAL BALLOT - CHARLESTON COUNTY, SC
CITY OF NORTH CHARLESTON SPECIAL ELECTION
JANUARY 13, 2026

EMERGENCY/
PROVISIONAL
NORTH
CHARLESTON 22
B002

Instructions

Marking Your Ballot



- To vote, darken the oval beside your choice using a blue or black pen. Do not make marks outside the oval.
- Vote for one candidate in each contest unless otherwise indicated.
- You do not have to vote in every contest.
- To change or correct your ballot, request a replacement from the election official.

Write-ins

- To write-in a candidate, darken the oval beside "Write-in" and print the name on the line provided.

City Council
District 1
Vote for One

- ☐ Edward Astle
- ☐ Adrian DeSaussure
- ☐ Greg Perry
- ☐ Dwayne Schalles
- ☐ Libby S Tisdale
- ☐ Kevin Walker-Porcher
- ☐

Write-In

Jenny Wooten
Interim Director
South Carolina Election Commission

ATTENTION VOTER: DO NOT REMOVE STUB FROM BALLOT

OFFICIAL BALLOT - CHARLESTON COUNTY, SC
CITY OF NORTH CHARLESTON SPECIAL ELECTION
JANUARY 13, 2026

EMERGENCY/
PROVISIONAL
NORTH
CHARLESTON 22
B002

No. _____

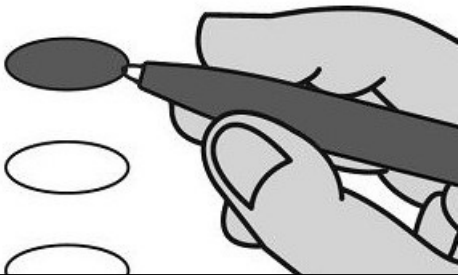
Initials of Issuing Officer

OFFICIAL BALLOT - CHARLESTON COUNTY, SC
CITY OF NORTH CHARLESTON SPECIAL ELECTION
JANUARY 13, 2026

EMERGENCY/
PROVISIONAL
NORTH
CHARLESTON 23
B003

Instructions

Marking Your Ballot



- To vote, darken the oval beside your choice using a blue or black pen. Do not make marks outside the oval.
- Vote for one candidate in each contest unless otherwise indicated.
- You do not have to vote in every contest.
- To change or correct your ballot, request a replacement from the election official.

Write-ins

- To write-in a candidate, darken the oval beside "Write-in" and print the name on the line provided.

City Council
District 1
Vote for One

- ☐ Edward Astle
- ☐ Adrian DeSaussure
- ☐ Greg Perry
- ☐ Dwayne Schalles
- ☐ Libby S Tisdale
- ☐ Kevin Walker-Porcher
- ☐

Write-In

Jenny Wooten
Interim Director
South Carolina Election Commission

ATTENTION VOTER: DO NOT REMOVE STUB FROM BALLOT

OFFICIAL BALLOT - CHARLESTON COUNTY, SC
CITY OF NORTH CHARLESTON SPECIAL ELECTION
JANUARY 13, 2026

EMERGENCY/
PROVISIONAL
NORTH
CHARLESTON 23
B003

No. _____

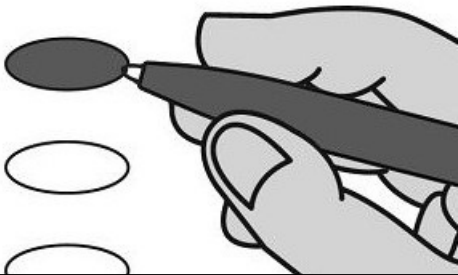
Initials of Issuing Officer

OFFICIAL BALLOT - CHARLESTON COUNTY, SC
CITY OF NORTH CHARLESTON SPECIAL ELECTION
JANUARY 13, 2026

EMERGENCY/
PROVISIONAL
NORTH
CHARLESTON 24
B004

Instructions

Marking Your Ballot



- To vote, darken the oval beside your choice using a blue or black pen. Do not make marks outside the oval.
- Vote for one candidate in each contest unless otherwise indicated.
- You do not have to vote in every contest.
- To change or correct your ballot, request a replacement from the election official.


Write-ins

- To write-in a candidate, darken the oval beside "Write-in" and print the name on the line provided.

City Council
District 1
Vote for One

- ☐ Edward Astle
- ☐ Adrian DeSaussure
- ☐ Greg Perry
- ☐ Dwayne Schalles
- ☐ Libby S Tisdale
- ☐ Kevin Walker-Porcher
- ☐

Write-In


Jenny Wooten
Interim Director
South Carolina Election Commission

ATTENTION VOTER: DO NOT REMOVE STUB FROM BALLOT

OFFICIAL BALLOT - CHARLESTON COUNTY, SC
CITY OF NORTH CHARLESTON SPECIAL ELECTION
JANUARY 13, 2026

EMERGENCY/
PROVISIONAL
NORTH
CHARLESTON 24
B004

No. _____

Initials of Issuing Officer